

TRANSOCEAN ENABLER

HARSH-ENVIRONMENT SEMI-SUBMERSIBLE



For additional information please contact:

Transocean
Marketing Department
4 Greenway Plaza
Houston, TX 77046, USA
Phone: + 1-713-232-7500
Fax: + 1-713-232-7880
marketing@deepwater.com
www.deepwater.com

General Description

Design / Generation	GVA 4000 NCS
Constructing Shipyard	DSME
Year Entered Service / Significant Upgrades	2016
Classification	DNV GL + 1A1 Column Stabilized Drilling Unit (N)
Flag	Norwegian
Dimensions	116 m long x 97 m wide (main deck)
Drafts	25.15 m max operating / 23.15 m operating / 9.45 m transit / 19.5m survival
Accommodation	130 persons
Displacement	60,124 mt
Variable Deck	4,000 mt operating / 3,000 mt transit
Transit Speed	up to 7 knots
Maximum Water Depth	500 m
Maximum Drilling Depth	8,500 m

Drilling Equipment

Derrick	MHWirth /Beam Leg Construction, Single lift H: 52.0 m (170,6 ft) Offline standbuilding
Hookload Capacity	680mt /750st
Drawworks	MHWirth /GH 3000 EG-AC-SV-01
Compensator	MHWirth – DSC 680mT Static, 454mT compensating. AHC 25,6mT compensating
Rotary Table	MHWirth RTSS 60 ½" – 1250sT mt
Top Drive	MHWirth DDM – 750 – AC - 2M
Tubular Handling	Riser feeding machine, 2 x pipe rack cranes, 2 x tubular feeding machine
Mud Pumps	3 x MH Wirth 2,200 hp. 7500 psi working pressure
HP Mud System	Rated for 7500 psi. K&C manifold 15000 psi.
Solids Control	5 x MH Derrick Dual pool 600 shakers
Burner Boom	Sebo Tech 30m, 10 lines, hydraulic slewing, dual spray nozzle position

Power & Machinery

Main Power	6 x Wartsila 12V32E engines rated 6.300 kw, 720 rpm, each driving Siemens 7,412 kVA AC generators. Total capacity 37.8 MW.
Emergency Power	3 x main engines (one in each engine room) classified as emergency engines/generators.
Power Distribution	Kongsberg Maritime K-Chief 700 Integrated Automation System, closed ring / 3 split, 11 Kv, 690V, 440V, 230V.

Storage Capacities

Fuel Oil	2600 m ³
Liquid Mud	1445 m ³
Base Oil	629 m ³
Brine	680 m ³
Drill Water	1508 m ³
Potable Water	681 m ³
Bulk Material (barite/bentonite)	340 m ³
Sack Storage	177 m ³

BOP & Subsea Equipment

BOP Rams	Cameron EVO 18-3/4 inch 10,000 psi 5 x ram preventers
BOP Annulars	1 x Annulars
BOP Handling	Overhead BOP crane 2 x 150 mt with aux winch
Marine Riser	21 inch, 50 ft long, WT 0.625 inch. 500 psi.
Tensioners	Wire line 4 dual and 4 single with a max wire pull of 686 mt
Diverter	16-inch flow line, 2 x 16" overboard lines
Tree Handling	Overhead Xmas Tree crane 2 x 50 mt aux winch MH Wirth dual XT stack-up with flush deck skidding arrangement and XT elevator from main deck to moonpool
Moonpool	10.3m Fwd to Aft x 9.0m Port to Stbd + Key slot to port side 5.1m Fwd to Aft x abt 16.5m to Port to Stbd

Station Keeping / Propulsion System

Thrusters	6 x Wartsila FS3510-771 each at 5 MW (8deg tilted)
DP System	Kongsberg DP Class 3 (DYNPOS AUTRO and DYNPOS-ER)
Mooring System	POSMOOR ATA(R) – 4 x Rolls Royce windlasses, 8 Primary lines + 4 prelay

Cranes

Cranes	2 x Liebherr BOS 4200 (100t at 9-24m internal lift / 67t at 20m external lift) 1 x Riser handling Knuckle Boom Crane (35mT at 12 to 25m)
--------	---

Other Information

Helideck	Rated for Sikorsky S-61N, S92
Barents Sea	Extended derrick windwall cladding and top hat, additional Swbd for heat tracing and pre-heaters for HVAC

Revision Date: 30 Jan 2018

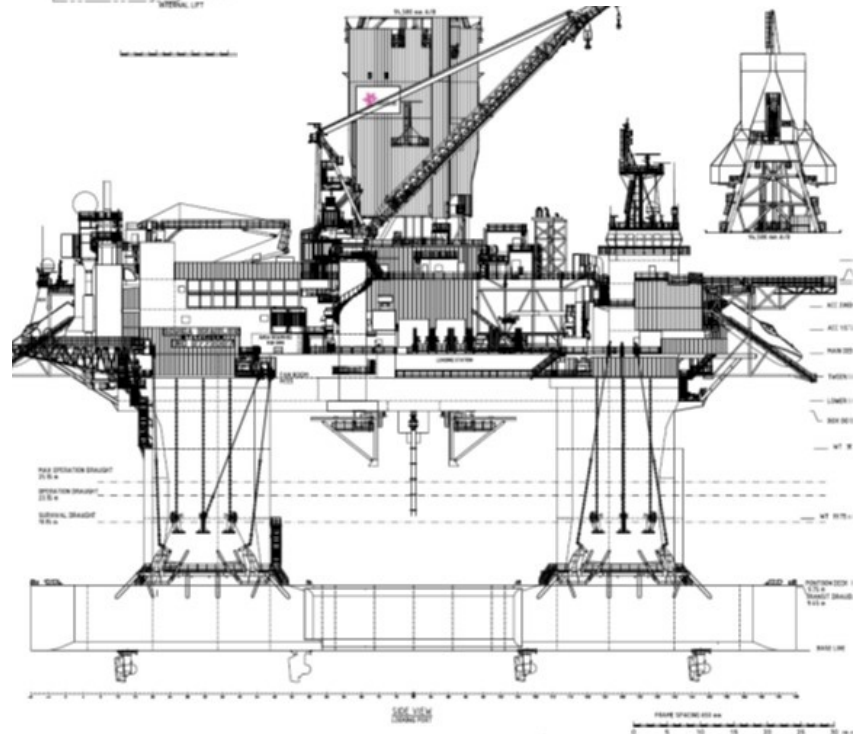
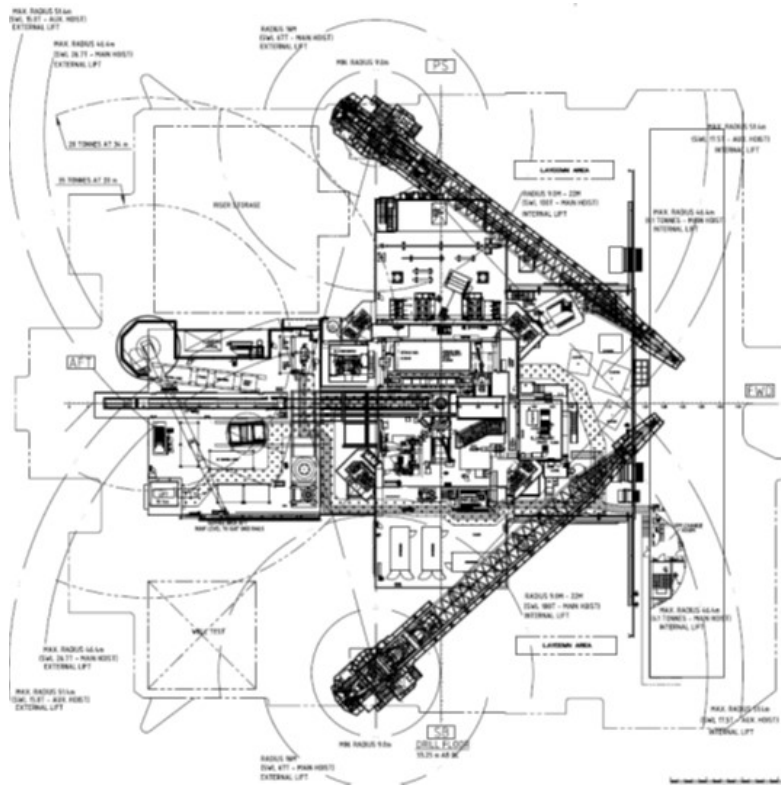


These specifications are intended for general reference purposes only, as actual equipment and specifications may vary based upon subsequent changes, the contract situation and customer needs. All equipment shall be operated and maintained at all times, in compliance with Transocean standard operating manuals, policies and procedures, and within its stated operational limits or continuous rated capacity, in order to assure maximum operational efficiency.

Patent Notice: This rig, its systems, components, and/or equipment in use on this rig, may be protected by one or more US and/or foreign patents.

TRANSOCEAN ENABLER

HARSH-ENVIRONMENT SEMI-SUBMERSIBLE



BOUNDLESS

Revision Date: 30 Jan 2018

**SERVICE FOCUSED
DATA DRIVEN
PERFORMANCE ORIENTED**



These specifications are intended for general reference purposes only, as actual equipment and specifications may vary based upon subsequent changes, the contract situation and customer needs. All equipment shall be operated and maintained at all times, in compliance with Transocean standard operating manuals, policies and procedures, and within its stated operational limits or continuous rated capacity, in order to assure maximum operational efficiency.

Patent Notice: This rig, its systems, components, and/or equipment in use on this rig, may be protected by one or more US and/or foreign patents.