

DEEPWATER MYLOS

ULTRA-DEEPWATER DUAL-ACTIVITY DRILLSHIP



For additional information please contact:

Transocean
Marketing Department
1414 Enclave Parkway
Houston, TX 77077, USA
Phone: + 1-713-232-7500
Fax: + 1-713-232-7880
marketing@deepwater.com
www.deepwater.com

General Description

Design / Generation	Samsung 12000
Constructing Shipyard	Samsung Heavy Industries, South Korea
Year Entered Service / Significant Upgrades	2013
Classification	ABS A1 Drillship AMS CDS ACCU DPS-3 (UWILD CRC(I) ENVIRO-OS DLA)
Flag	Marshall Islands
Dimensions	748 ft. (228 m) x 137.8 ft. (42 m) beam x 62.3 ft. (19 m) Depth
Drafts	37.7 ft (11.5 m) operating / 37.7 ft (11.5 m) survival / 27.9 ft (8.5 m) transit
Accommodation	215 persons
Displacement	105,822 st (96,000 mt) operating / 66,500 transit
Variable Deck	22,046 st. (20,000 mt) operating / 14,868 st. (16,500 mt) transit
Transit Speed	up to 12 knots
Maximum Water Depth	12,000 ft (3,568 m) designed / 10,000 ft (3,048 m) outfitted
Maximum Drilling Depth	40,000 ft (12,192 m)

Drilling Equipment

Derrick	Dual derrick 210 ft. (64 m) (Main) NOV Type DDBN-1250 (Aux) NOV Type DDBN-1 000
Hookload Capacity	(Main) 1,250 st. (1,134 mt) capacity (Aux) 1,000 st. (907 mt) capacity
Drawworks	(Main) NOVSSGD-1250-6900hp (Aux) NOV SSGD-1000-5750hp
Compensator	(Main) NOV CMC-E 1,250 st (1,134 mt) with 25 ft (7.6 m) max stroke (Aux) NOV CMC 1,000 st (907 mt) with 25 ft (7.6 m) max stroke
Rotary Table	(Main) NOV RST-755 75-1/2" hydraulic driven at 1,375 st. (1,247 mt) 45,000 ft.-lbs. maximum generated torque (Aux) NOV RST-605 60-1/2" false rotary table rated at 1,000 st. (907 mt)
Top Drive	(Main & Aux) NOV TDX-1250 electric rated to 1,250 st. (1,134 mt) with a continuous torque output of 105,000 ft.-lbs. (at 130 rpm) and two (2) x 1,340 hp. AC motors
Tubular Handling	2 x NOV Hydraracker IV pipe handlers, 2x NOV Multi Purpose Tong (MPT 200) Iron Roughnecks with TF-975 tool frame, Fwd and aft catwalk machines
Mud Pumps	5 x HP Triplex mud pumps NOV-14P-220, 2200hp, 7500psi
Solids Control	6 x VSM 300 shale shakers

Power & Machinery

Main Power	6 x Wartsila 16/32 LowNox diesel engines, 7290 kW each total 43,740 kW 6 x ABB AMG 900 LSE generators, 7000 kW each, total 42,000 kW
Emergency Power	1 x STX Cummins / QSK60DMGE diesel engine rated 2,547 kW, driving 1 x Newage / PM734E1 1,350 kW generator.

Storage Capacities

Fuel Oil	51,457 bbl. (8,181 m3)
Liquid Mud	6,437 bbl. (1,023 m3) active / 9,447 (1,502 m3) reserve
Base Oil	6,008 bbl. (955 m3)
Brine	10,095 bbl. (1,605 m3)
Drill Water	19,593 bbl. (3,115 m3)
Potable Water	9,139 bbl. (1,453 m3)
Bulk Material	(mud + cement) 31,924 cu. ft.
Sack Storage	26 ft. (8 m) x 62 ft. (19 m) x 13 ft. (4 m)

BOP & Subsea Equipment

BOP	NOV Shaffer 7 ram 18/ 3/4" NXT BOP. 15,000psi
Second BOP	NOV Shaffer 7 ram 18/ 3/4" NXT BOP. 15,000psi
Wellhead Connector	Vetco Super HD H4 DWD type
Annulars	2 x NOV Shaffer 10,000psi
Marine Riser	NOV FT-HB 21" OD Flanged. With 4 1/2" ID K/C lines, 4" ID booster line and 2ea conduit lines
Tensioners	8 x dual (16ea) NOV / Dual WRTs, 112.4 st. (102 mt) / 1,799 st. (1,632 mt / 3,600 kips)
Diverter	NOV Shaffer 21-500-75 EXT
BOP Control	NOV 112-Line 5th Generation MUX Pod
Moonpool	84 ft. (25.6 m) x 41 ft. (12.48 m)

Station Keeping / Propulsion System

Thrusters	6 x Rolls Royce UUC 455 azimuth thrusters
DP System	DP Class 3 Kongsberg / ICMS / K-POS

Cranes

Cranes	(Fwd) 2 x Knuckle Boom Crane 93.7 st. (85 mt), type OC3932KCE (Aft) 2 x NOV. Knuckle Boom Crane 110 st. (100 mt), type OC4000KCE
--------	--

Other Information

Helideck	D 72.8 ft. (22.2 m), 14 st. (12.8 mt) load capacity, rated for Sikorsky S-92 helicopters
----------	--

BOUNDLESS

Revision Date: 14 July 2022



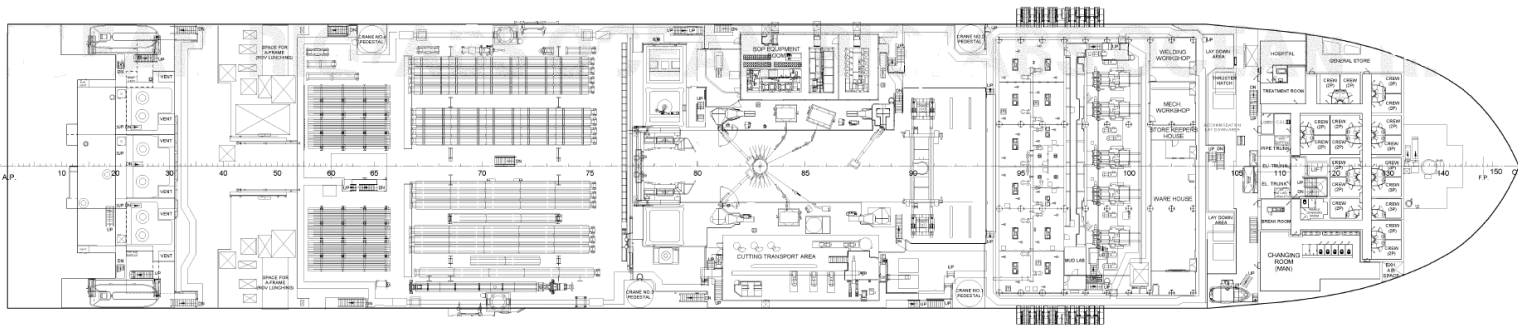
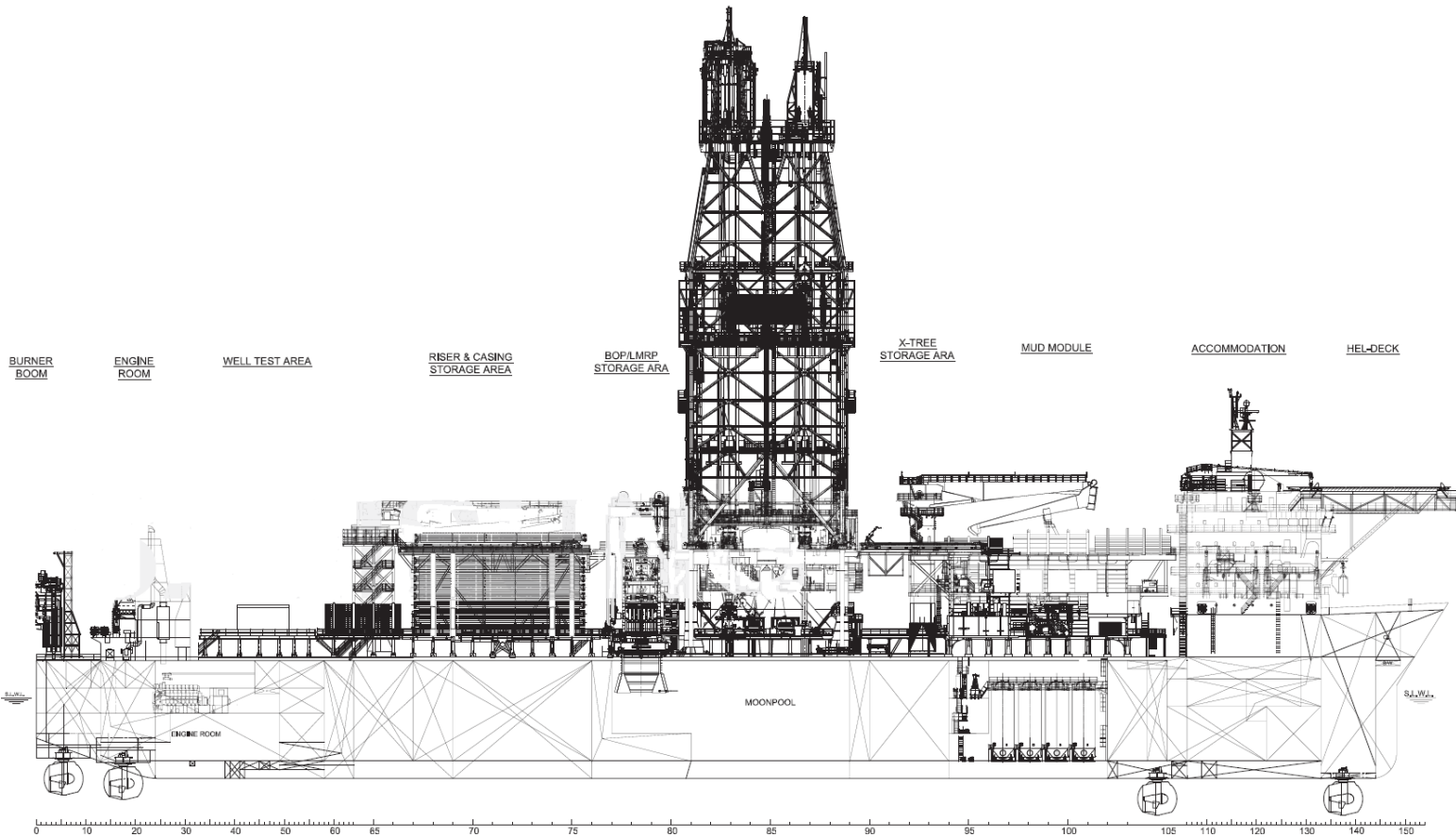
SERVICE FOCUSED DATA DRIVEN PERFORMANCE ORIENTED

These specifications are intended for general reference purposes only, as actual equipment and specifications may vary based upon subsequent changes, the contract situation and customer needs. All equipment shall be operated and maintained at all times, in compliance with Transocean standard operating manuals, policies and procedures, and within its stated operational limits or continuous rated capacity, in order to assure maximum operational efficiency.

Patent Notice: This rig, its systems, components, and/or equipment in use on this rig, may be protected by one or more US and/or foreign patents.

OCEAN RIG MYLOS

ULTRA-DEEPWATER DUAL-ACTIVITY DRILLSHIP



BOUNDLESS

Revision Date: 14 July 2022

SERVICE FOCUSED DATA DRIVEN PERFORMANCE ORIENTED



These specifications are intended for general reference purposes only, as actual equipment and specifications may vary based upon subsequent changes, the contract situation and customer needs. All equipment shall be operated and maintained at all times, in compliance with Transocean standard operating manuals, policies and procedures, and within its stated operational limits or continuous rated capacity, in order to assure maximum operational efficiency.

Patent Notice: This rig, its systems, components, and/or equipment in use on this rig, may be protected by one or more US and/or foreign patents.