

# OCEAN RIG APOLLO

ULTRA-DEEPWATER DUAL-ACTIVITY DRILLSHIP



## General Description

<b>Design / Generation</b>	Samsung 12000
<b>Constructing Shipyard</b>	Samsung Heavy Industries, South Korea
<b>Year Entered Service / Significant Upgrades</b>	2015
<b>Classification</b>	ABS +A1 Drillship E-circle, +AMS +CDS +ACCU, +DPS-3 (RRDA, UWILD, OHCM, CRC, BWT, ENVIRO-OS, RW, DLA, GP)
<b>Flag</b>	Marshall Islands
<b>Dimensions</b>	748 ft. (228 m) x 137.8 ft. (42 m) 62.3 beam x 62.3 ft. (19 m) depth
<b>Drafts</b>	37.7 ft (11.5 m) 27.operating / 37.7 ft survival / 27.9 ft (8.5) transit
<b>Accommodation</b>	215 persons
<b>Displacement</b>	105,822 st (96,000 mt) operating / 73,303 st (66,500 mt) transit
<b>Variable Deck</b>	22,046 st (20,000 mt) operating / 18,188 st (16,500 mt) transit
<b>Transit Speed</b>	up to 12 knots
<b>Maximum Water Depth</b>	12,000 ft (3,658 m) designed / 10,000 ft (3,048 m) outfitted
<b>Maximum Drilling Depth</b>	40,000 ft (12,192 m)

## Drilling Equipment

<b>Derrick</b>	Dual derrick 210 ft (64 m) (Main) NOV Type DDBN-1250 (Aux) NOV Type DDBN-1 000
<b>Hookload Capacity</b>	(Main) 1,250 st. (1,134 mt) capacity (Aux) 1,000 st. (907 mt) capacity
<b>Drawworks</b>	(Main) NOV SSGD-1250-6900hp (Aux) NOV SSGD-1000-5750hp
<b>Compensator</b>	(Main) NOV CMC-E, 1,250 st (1,134 mt) (Aux) NOV CMC, 1,000 st (907 mt)
<b>Rotary Table</b>	(Main) NOV RST-755 75-1/2" hydraulic driven at 1,375 st (1,247 mt); 45,000 ft.-lbs. maximum generated torque (Aux) NOV RST-605 60-1/2" false rotary table rated at 1,000 st (907 mt)
<b>Top Drive</b>	2 x NOV TDX-1250, rated to 1,250 st (1,134 mt)
<b>Tubular Handling</b>	2 x NOV Hydraracker IV pipe handlers, 2 x NOV Multi Purpose Tong (MPT 200) Iron Roughnecks with TF-975 tool frame, Fwd and aft catwalk machines
<b>Mud Pumps</b>	5 x HP Triplex mud pumps NOV-14P-220, 2200hp, 7500psi
<b>Solids Control</b>	6 x VSM 300 shale shakers

## Power & Machinery

<b>Main Power</b>	6x Wartsila 16/32 LowNox, 7290 kW each total 43,740 kW 6x ABB AMG 900 LSE, 7000 kW each, total 42,000 kW
<b>Emergency Power</b>	1 x STX Cummins / QSK60DMGE 2,547 HP diesel engine driving 1 x Newage / PM734E1 generator

## Storage Capacities

<b>Fuel Oil</b>	53,770 bbl. (8,549 m3)
<b>Liquid Mud</b>	6,430 bbl. (1,022 m3) active / 9,440 bbl. (1,500 m3) reserve
<b>Base Oil</b>	4,680 bbl. (744 m3)
<b>Brine</b>	4,710 bbl. (749 m3)
<b>Drill Water</b>	15,200 bbl. (2,417 m3)
<b>Potable Water</b>	8,120 bbl. (1,291 m3)
<b>Bulk Material</b>	(mud + cement) 31,920 cu.ft. (904 m3)
<b>Sack Storage</b>	26.25 ft. (8 m) x 62.3 ft. (19 m) x 13 ft. (4 m)

## BOP & Subsea Equipment

<b>BOP</b>	NOV Shaffer 7 ram 18/ 3/4" NXT BOP. 15,000psi
<b>Wellhead Connector</b>	Vetco Super HD H4 DWD type
<b>Annulars</b>	2 x NOV Shaffer 10,000psi
<b>Marine Riser</b>	NOV FT-HB 21" OD Flanged. With 4 1/2" ID K/C lines, 4" ID booster line and 2ea conduit lines
<b>Tensioners</b>	8 x dual (16ea) NOV / Dual WRTs, 112.4 st (102 mt) / 1,799 st (1,632 mt)
<b>Diverter</b>	NOV Shaffer 21-500-75 EXT
<b>BOP Control</b>	NOV 112-Line 5th Generation MUX Pod
<b>Moonpool</b>	84 ft. (25.6 m) x 41 ft. (12.48 m)

## Station Keeping / Propulsion System

<b>Thrusters</b>	6 x Rolls Royce UUC 455 azimuth thrusters
<b>DP System</b>	DP Class 3 Kongsberg / ICMS / K-POS

## Cranes

<b>Cranes</b>	(Fwd) 2 x Knuckle Boom Crane 94 st (85mt), type OC3932KE (Aft) 2 x NOV. Knuckle Boom Crane 110 st (100 mt), type OC4000KE
---------------	--

## Other Information

<b>Helideck</b>	D 72.8 ft (22.2 m), 14 st (12.8 mt) load capacity, rated for Sikorsky S-92 helicopters
-----------------	--

For additional information please contact:

Transocean  
Marketing Department  
1414 Enclave Parkway  
Houston, TX 77077, USA  
Phone: + 1-713-232-7500  
Fax: + 1-713-232-7880  
[marketing@deepwater.com](mailto:marketing@deepwater.com)  
[www.deepwater.com](http://www.deepwater.com)

# BOUNDLESS

Revision Date: 14 July 2022



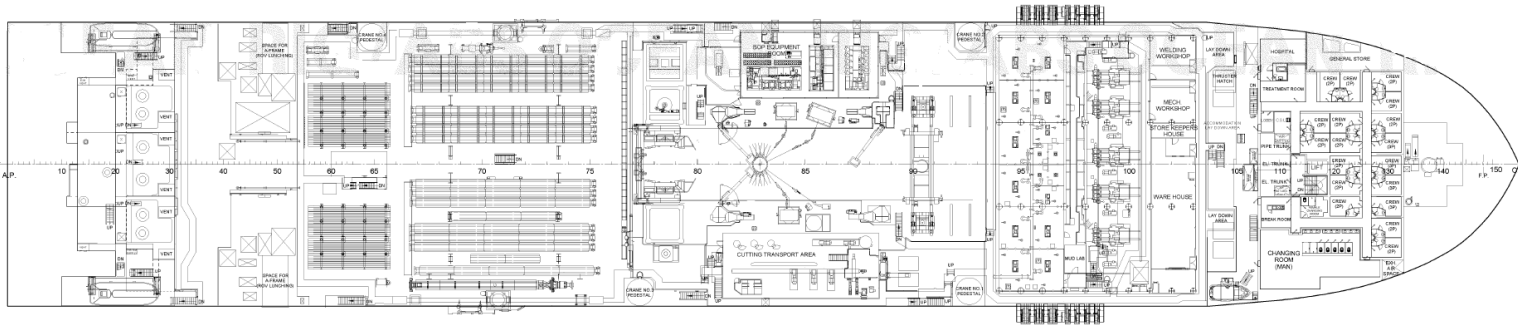
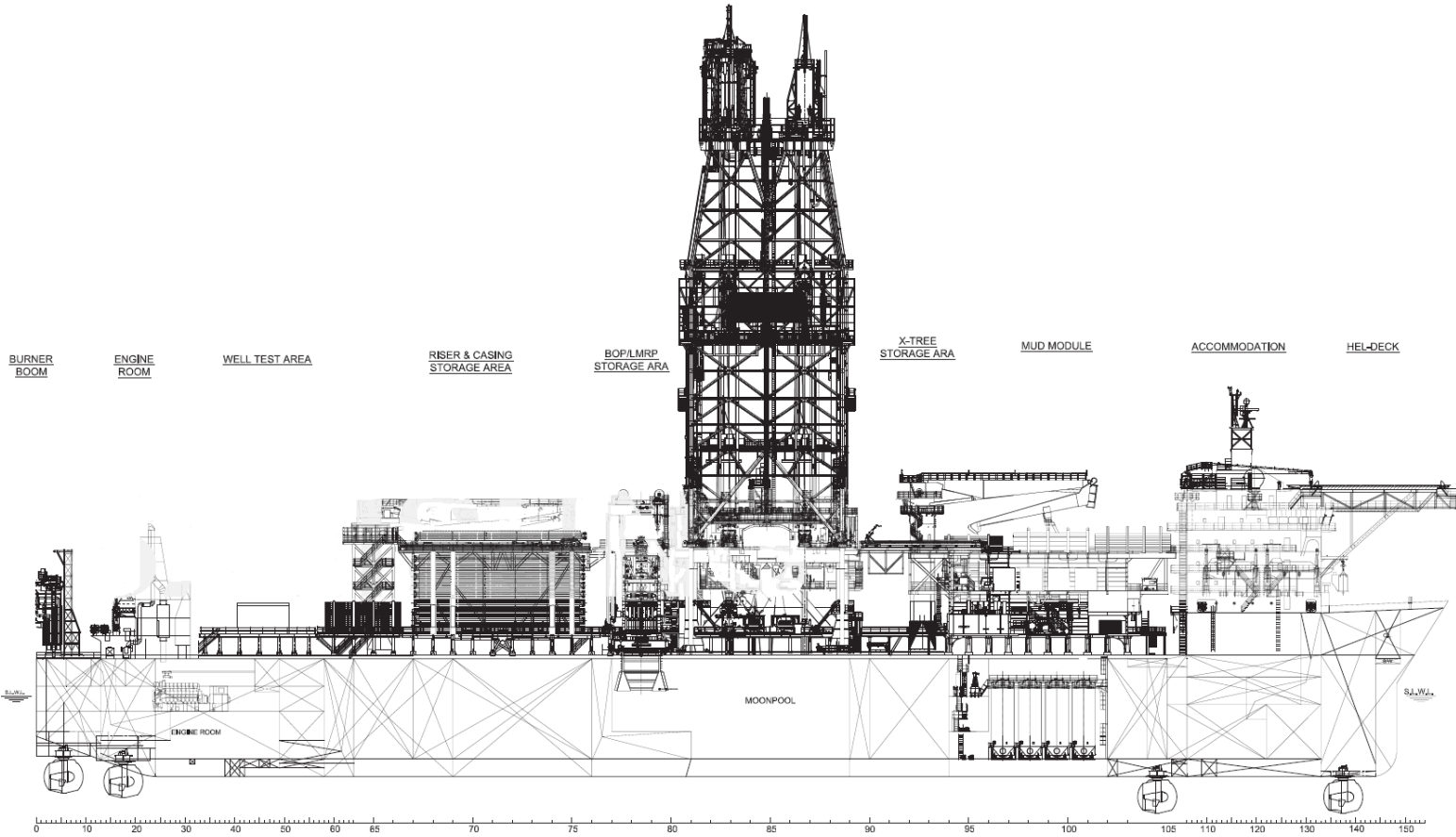
**SERVICE FOCUSED  
DATA DRIVEN  
PERFORMANCE ORIENTED**

These specifications are intended for general reference purposes only, as actual equipment and specifications may vary based upon subsequent changes, the contract situation and customer needs. All equipment shall be operated and maintained at all times, in compliance with Transocean standard operating manuals, policies and procedures, and within its stated operational limits or continuous rated capacity, in order to assure maximum operational efficiency.

Patent Notice: This rig, its systems, components, and/or equipment in use on this rig, may be protected by one or more US and/or foreign patents.

# OCEAN RIG APOLLO

ULTRA-DEEPWATER DUAL-ACTIVITY DRILLSHIP



# BOUNDLESS

Revision Date: 14 July 2022

## SERVICE FOCUSED DATA DRIVEN PERFORMANCE ORIENTED



These specifications are intended for general reference purposes only, as actual equipment and specifications may vary based upon subsequent changes, the contract situation and customer needs. All equipment shall be operated and maintained at all times, in compliance with Transocean standard operating manuals, policies and procedures, and within its stated operational limits or continuous rated capacity, in order to assure maximum operational efficiency.

Patent Notice: This rig, its systems, components, and/or equipment in use on this rig, may be protected by one or more US and/or foreign patents.