

# DISCOVERER INDIA

## ULTRA-DEEPWATER DUAL-ACTIVITY DRILLSHIP



### For additional information please contact:

Transocean  
Marketing Department  
4 Greenway Plaza  
Houston, TX 77046, USA  
Phone: + 1-713-232-7500  
Fax: + 1-713-232-7880  
[marketing@deepwater.com](mailto:marketing@deepwater.com)  
[www.deepwater.com](http://www.deepwater.com)

### General Description

<b>Design / Generation</b>	Transocean Offshore Enhanced Enterprise Class
<b>Constructing Shipyard</b>	DSME, South Korea
<b>Year Entered Service / Significant Upgrades</b>	2010
<b>Classification</b>	DNV, 1A1
<b>Flag</b>	Marshall Islands
<b>Dimensions</b>	835 ft. long x 125 ft. wide x 62 ft. deep
<b>Drafts</b>	40 ft. operating / 28 ft. transit
<b>Accommodation</b>	220 persons
<b>Displacement</b>	99,405 st operating
<b>Variable Deck</b>	22,046 st operating / 22,046 st transit
<b>Transit Speed</b>	up to 12 knots
<b>Maximum Water Depth</b>	12,000 ft. designed / 10,000 ft. outfitted
<b>Maximum Drilling Depth</b>	40,000 ft

### Drilling Equipment

<b>Derrick</b>	NOV Dual Activity Derrick, 220ft. high, with 80 ft. x, 80 ft. base.
<b>Hookload Capacity</b>	(Main) 2,500,000 lbs. gross nominal capacity. (Aux) 2,000,000 lbs. gross nominal capacity.
<b>Drawworks</b>	(Main): NOV Active Heave Drawworks with 6 x General Electric GEB-22A2 motors rated at 6,900 total hp. 1,050 st rated hook load with 2 inch drill line. (Aux): NOV Active Heave Drawworks with 6 x General Electric GEB-22A2 motors rated at 6,900 total hp. 1,050 st rated hook load with 2 inch drill line.
<b>Compensator</b>	(Main) In drawworks, active heave compensation (Aux) In drawworks, active heave compensation.
<b>Rotary Table</b>	(Main) 1 x 75-1/2 inch opening 1375 st rated. (Aux) 1 x 60-1/2 inch opening 1000sti rated.
<b>Top Drive</b>	(Main) 2 x Aker Maritime Hydraulics MDDM rated at 1,250 st motor, rated to 101,200 ft.-lbs. continuous drilling torque in low gear (Aux) Same as above.
<b>Tubular Handling</b>	2 x NOV PRS_5 pipe racking system, complete with pipe conveyer, PLS-5 Pipe Laydown System, and 2 x AR4500 Iron Roughnecks. Set up for offline stand building.
<b>Riser Feed</b>	NOV Conveyer Riser Handling System (RHS). 75 ft long x nominal 21 inch HMF-G Riser Equipment for 10,000 ft. water depth.
<b>Mud Pumps</b>	4 x National 14-P-220 triplex pumps, each driven by 2 x AC 1,230 hp traction motors.
<b>HP Mud System</b>	Rated for 7,500 psi
<b>Solids Control</b>	6 x Axiom AX-1 shale shakers

### Power & Machinery

<b>Main Power</b>	6 x STX-MAN-B&W 14V32/40 diesel engines rated at 6,720 kW, each driving 1 x LDW-S5E 6,520 kW generator
<b>Emergency Power</b>	1 x STX-MAN-B&W 7L27/38 diesel engine rated 2,310 kW, driving 1 x Hyundai 2,234 kW generator.
<b>Power Distribution</b>	Siemens 11kV switchboards; with Siemens Blue variable speed drives generator protection.

### Storage Capacities

<b>Fuel Oil</b>	35,317 bbl
<b>Liquid Mud</b>	20,000 bbl Active
<b>Base Oil</b>	9,215 bbl
<b>Brine</b>	20,288 bbl
<b>Drill Water</b>	11,950 bbl
<b>Potable Water</b>	7,550 bbl
<b>Bulk Material</b>	(mud + cement) 32,000 cu.ft.
<b>Sack Storage</b>	16,000 sacks

### BOP & Subsea Equipment

<b>BOP Rams</b>	1 x Hydril 18-3/4 inch 15,000 psi 6-ram preventer. (3 x compact dual ram)
<b>BOP Annulars</b>	Hydril Dual Annuflex 18-3/4 inch 10,000 psi annular preventer.
<b>BOP Handling</b>	BOP skid system comprised of 3 x 375 st BOP carts; 3 x 100 st Xmas Tree/Auxiliary carts; 2 x sets of spider beams rated to 350 st per set
<b>Marine Riser</b>	Vetco HMF 21 inch OD. Riser joints that average 75 ft. long per joint.
<b>Tensioners</b>	6 x NOV N-line Tensioning System, rated at 400 st each and with a stroke of 50 ft.
<b>Diverter</b>	Vetco CSO diverter with an opening of 72 inches and a rated pressure of 500 psi and 2 x 16 inch flow lines.
<b>Tree Handling</b>	3 x 100 st Xmas tree skid carts;
<b>Moonpool</b>	80 ft. length x 30 ft. width.

### Station Keeping / Propulsion System

<b>Thrusters</b>	6 x Rolls Royce Aquamaster 5,500 kW fully azimuthing thrusters.
<b>DP System</b>	Kongsberg triple redundant SDP-32 Dynamic Positioning System. DP Class 3 rating.

### Cranes

<b>Cranes</b>	4 x NOV Knuckle Boom cranes rated for 100 mt and a lift radius of 148 ft.
---------------	---

### Other Information

<b>Helideck</b>	Rated for Sikorsky S-61 or Chinook 234 helicopters
<b>Other</b>	(1) BOP Acoustic Backup Control System, (2) Managed Pressure Drilling (MPD) Ready

Revision Date: 26 March 2018

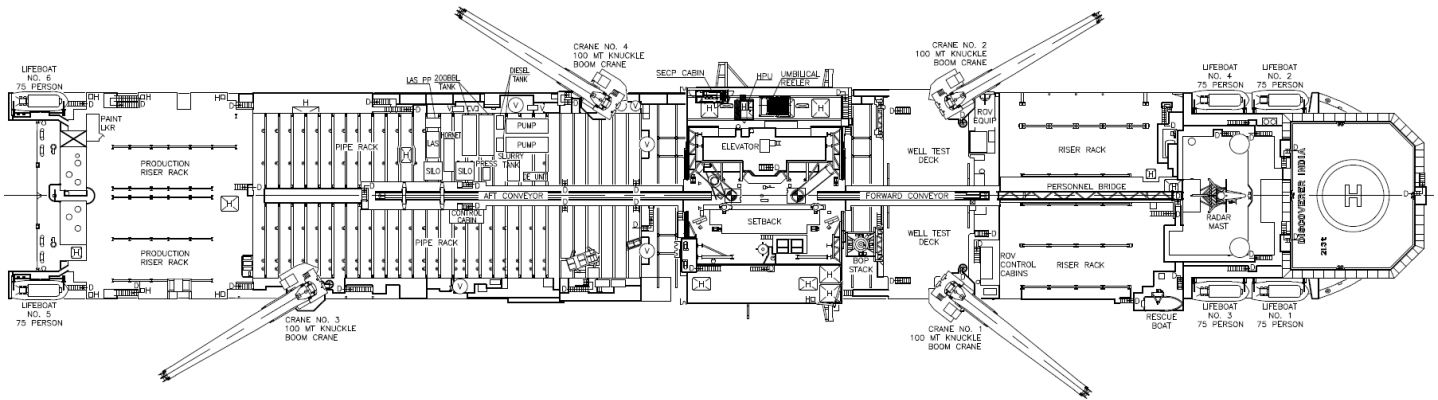
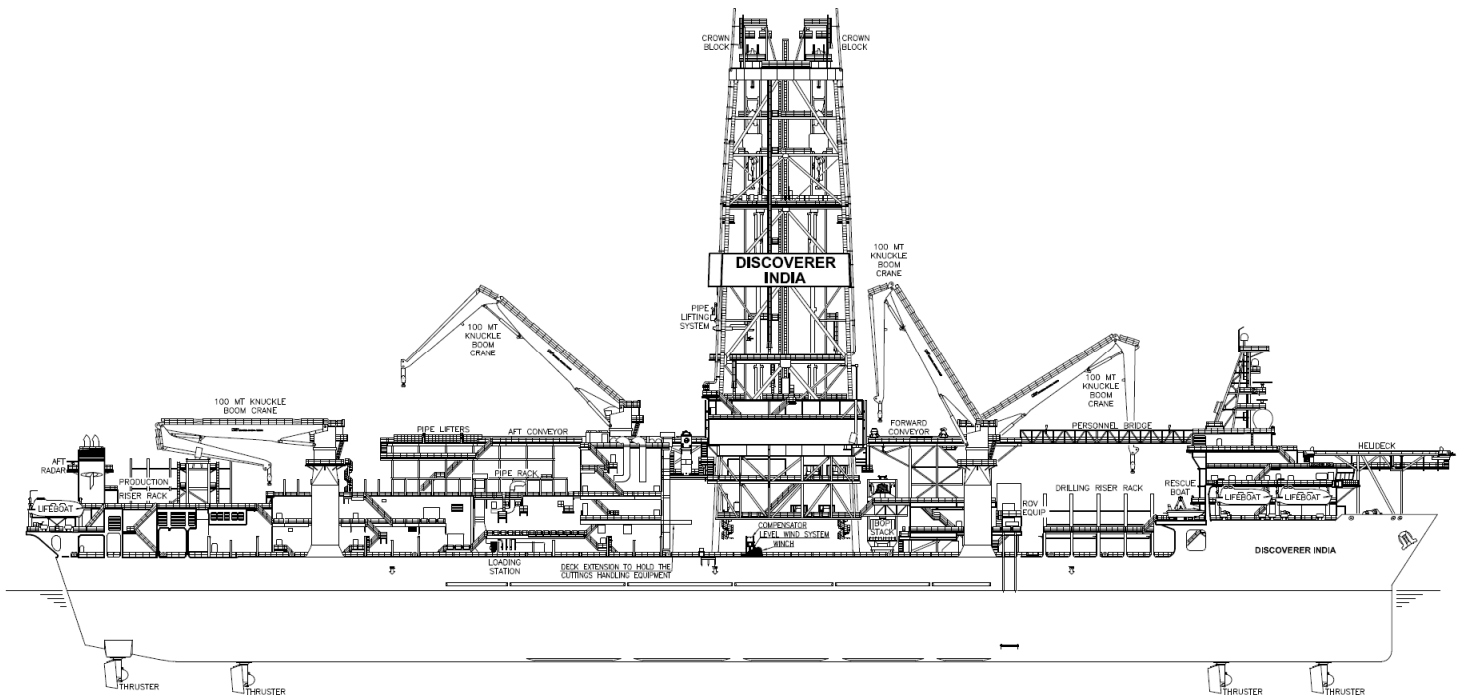


These specifications are intended for general reference purposes only, as actual equipment and specifications may vary based upon subsequent changes, the contract situation and customer needs. All equipment shall be operated and maintained at all times, in compliance with Transocean standard operating manuals, policies and procedures, and within its stated operational limits or continuous rated capacity, in order to assure maximum operational efficiency.

Patent Notice: This rig, its systems, components, and/or equipment in use on this rig, may be protected by one or more US and/or foreign patents.

# DISCOVERER INDIA

ULTRA-DEEPWATER DUAL-ACTIVITY DRILLSHIP



# BOUNDLESS

Revision Date: 26 March 2018



**SERVICE FOCUSED  
DATA DRIVEN  
PERFORMANCE ORIENTED**

These specifications are intended for general reference purposes only, as actual equipment and specifications may vary based upon subsequent changes, the contract situation and customer needs. All equipment shall be operated and maintained at all times, in compliance with Transocean standard operating manuals, policies and procedures, and within its stated operational limits or continuous rated capacity, in order to assure maximum operational efficiency.

Patent Notice: This rig, its systems, components, and/or equipment in use on this rig, may be protected by one or more US and/or foreign patents.