

DISCOVERER AMERICAS

ULTRA-DEEPWATER DUAL-ACTIVITY DRILLSHIP



For additional information please contact:

Transocean
Marketing Department
1414 Enclave Parkway
Houston, TX 77077, USA
Phone: + 1-713-232-7500
Fax: + 1-713-232-7880
marketing@deepwater.com
www.deepwater.com

General Description

Design / Generation	Transocean Offshore Enhanced Enterprise Class
Constructing Shipyard	Daewoo Shipbuilding and Marine Engineering Korea
Year Entered Service / Significant Upgrades	2009
Classification	DNV +1A1
Flag	Marshall Islands
Dimensions	835 ft. (254 m) x 125 ft. (38 m) x 62 ft. (19 m) Deep
Drafts	42.6 ft. (13 m) operating / 39 ft. (11.8 m) Transit
Accommodation	200 persons
Displacement	98,421 st (89,286 mt) operating
Variable Deck	22,046 st (19,999.7 mt) operating / 22,046 st (19,999.7 mt) transit
Transit Speed	up to 12 knots
Maximum Water Depth	12,000 ft. (3657.6 m) designed / 10,000 ft. (3,048 m) Outfitted
Maximum Drilling Depth	40,000 ft (12,192 m)

Drilling Equipment

Derrick	NOV Dual Activity derrick, 226 ft. (68.8 m) high, with 80 ft. x 80 ft. (24.4 x 24.4 m) base.
Hookload Capacity (Main)	1,250 st (1,134 mt) capacity
	(Aux) 1,250 st (1,134 mt) capacity
Drawworks	(Main): NOV Active Heave Drawworks with 6 x General Electric GEB-22A2 motors rated at 6,900 total hp. 1,050 st (952.5 mt) rated hook load with 2" drill line
	(Aux): NOV Active Heave Drawworks with 6 x General Electric GEB-22A2 motors rated at 6,900 total hp. 1,050 st (952.5 mt) rated hook load with 2" drill line.
Compensator	(Main) Active Heave Drawworks
	(Aux) Active Heave Drawworks
Rotary Table	(Main) NOV/RST 75.5" opening rated to 1,375 st. (1,247 mt) also with a maximum generated torque rating of 45,000 ft/lbs.
	(Aux) NOV/RST 605 with a 60.5" opening and a rated capacity of 1,000 st. (907 mt) also with a maximum generated torque rating of 45,000 ft/lbs.
Top Drive	(Main) Maritime Hydraulics/MDDM-1250-AC with a rated capacity of 1,250 st. (1,134 mt) driven by 2 x electric ABB AMH423 LM6 AC motors with a maximum continuous torque rating of 101,200 continuous torque rating.
	(Aux) Same as main
Tubular Handling	2 x NOV PRS-5 pipe racking system, 2 x NOV Riser & Casing PRS Tailing head, 1 x NOV Riser Tailing Arm, 2 x NOV AR 4500 iron roughnecks.
Riser Feed	2 x NOV riser handling system and able to handle 75ft. (22.8 m) riser joints lengths.
Mud Pumps	4 x NOV Hex pumps, each driven by two (2) Baylor VCM632RUT traction motors rated to 1,275 hp each.
HP Mud System	Rated for 7,500 psi
Solids Control	10 x Brandt LCM-3D CM2 shale shakers

Power & Machinery

Main Power	6 x MAN B&W 14V 32/40 diesel engines rated to 6,720 kW and 11,000 volts, driving 6 x LDW-Siemens S5E1250-10SE+wk generators rated 6.456 kW
Emergency Power	1 x STX-MAN-B&W 4 stroke 7 cylinder with a maximum output of 3,098 hp, driving a Hyundai generator rated at 2,100 kW.
Power Distribution	Siemens 11 Kv switch board feeding Siemens blue variable speed drive, PWM type generator protection.

Storage Capacities

Fuel Oil	32,594 bbl (5,182 m3)
Liquid Mud	7,890 bbls.(1,254 m3) Active / 11,568 bbls.(1839 m3) Reserve
Base Oil	11,095 bbl (1,764 m3)
Brine	11,095 bbl(1,764 m3)
Drill Water	12,283 bbl(1,953 m3)
Potable Water	7,500 bbl(1,192.4 m3)
Bulk Material	(mud + cement) 32,000 cu.ft. (906 m3)
Sack Storage	16,000 sacks

BOP & Subsea Equipment

BOP Rams	Hydril Compact Dual Ram 18-3/4" 15,000 psi BOP utilizing 3 x double ram preventers
BOP Annulars	Hydril GX 18-3/4" 10,000 psi annular preventer on LMRP
BOP Handling	Subsea Venture Inc. BOP skid carts system rated at 375 st (340 mt).
Marine Riser	Vetco / HMF-G with a 21" OD, average length per joint: 75 ft (22.8 m)
Tensioners	6 x Hydralift tensioners rated to 400st (362.8 mt). with a maximum stroke of 50ft (15.2 m).
Diverter	Vetco CSO 60 inch rated to 500 psi with 16" outlets
Tree Handling	3 x SVI Xmas tree skid carts rated to 99 st (90 mt). each.
Moonpool	73 ft. (22.2 m) length x 30 ft. (9.1m) width.

Station Keeping / Propulsion System

Thrusters	6 x Rolls Royce thrusters 360 degree azimuthing rated to 7,000 hp. With fixed blades
DP System	Kongsberg-Simrad triple-redundant K-POS-32 dynamic positioning system. Full DP

Cranes

Cranes	4 x NOV Pedestal OC 4000KCE Electro Hydraulic cranes rated to 110 st (100 mt) at a 86 ft (26.2 m) radius
Riser Handling	2 x NOV Riser Yoke 30mt Capacity, 2 x NOV Turning Device
Casing/DP	1 x NOV Gripper Claw Yoke, 1 x NOV Magnet Yoke

Other Information

Helideck	Rated for Sikorsky S-61 or Chinook 234 helicopters. 75ft. x 90ft (22.8 x 27.4 m)
-----------------	--

Revision Date: 12 July 2022

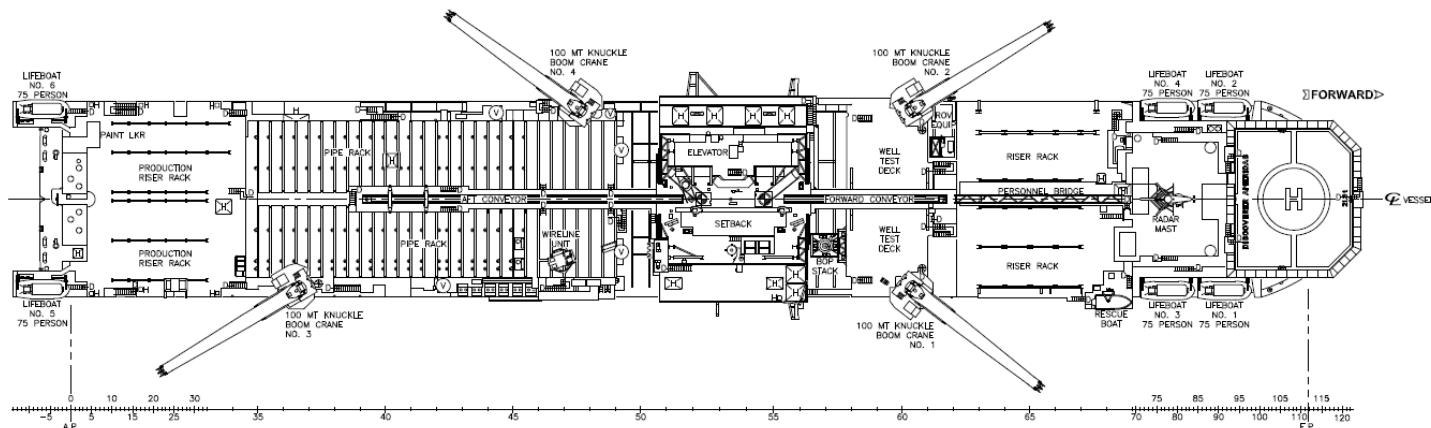


These specifications are intended for general reference purposes only, as actual equipment and specifications may vary based upon subsequent changes, the contract situation and customer needs. All equipment shall be operated and maintained at all times, in compliance with Transocean standard operating manuals, policies and procedures, and within its stated operational limits or continuous rated capacity, in order to assure maximum operational efficiency.

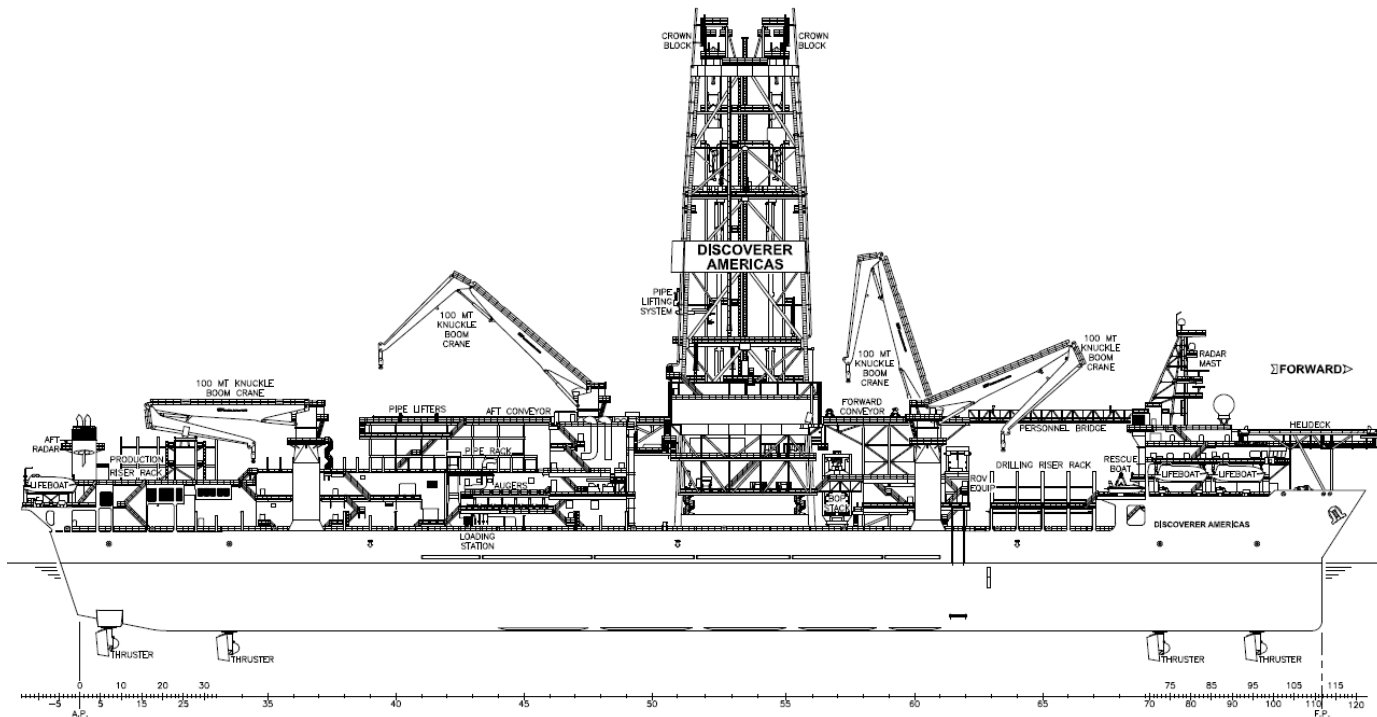
Patent Notice: This rig, its systems, components, and/or equipment in use on this rig, may be protected by one or more US and/or foreign patents.

DISCOVERER AMERICAS

ULTRA-DEEPWATER DUAL-ACTIVITY DRILLSHIP



PLAN 4B PLAN VIEW
SCALE 1/20"=1'-0"



BOUNDLESS

SERVICE FOCUSED
DATA DRIVEN
PERFORMANCE ORIENTED

Revision Date: 12 July 2022



These specifications are intended for general reference purposes only, as actual equipment and specifications may vary based upon subsequent changes, the contract situation and customer needs. All equipment shall be operated and maintained at all times, in compliance with Transocean standard operating manuals, policies and procedures, and within its stated operational limits or continuous rated capacity, in order to assure maximum operational efficiency.

Patent Notice: This rig, its systems, components, and/or equipment in use on this rig, may be protected by one or more US and/or foreign patents.