

# SEDCO 711

## MIDWATER SEMI-SUBMERSIBLE



### For additional information please contact:

Transocean  
Marketing Department  
4 Greenway Plaza  
Houston, TX 77046, USA  
Phone: + 1-713-232-7500  
Fax: + 1-713-232-7880  
[marketing@deepwater.com](mailto:marketing@deepwater.com)  
[www.deepwater.com](http://www.deepwater.com)

### General Description

Design / Generation	MODU (CSDU) Earl&Wright Sedco 711
Constructing Shipyard	Hyundai Heavy Ind., South Korea
Year Entered Service / Significant Upgrades	1982
Classification	A1 EM Column Stabilised MODU + PAS
Flag	Vanuatu
Dimensions	295 ft. long x 249 ft. wide x 130 ft. deep
Drafts	83.5 ft
Accommodation	116 persons
Displacement	28,585 st operating / 18,403 mt transit
Variable Deck	3,178 st operating / 1,493 st transit
Transit Speed	up to 6 knots
Maximum Water Depth	1,800 ft. designed / 1,000 ft. outfitted
Maximum Drilling Depth	25,000 ft

### Drilling Equipment

Derrick	Dreco, 185 ft. high, with 50 ft. long, 50 ft. wide base.
Hookload Capacity	1,300,000 lbs. gross nominal capacity
Drawworks	National Oilwell E-3000, 2 x EMD D-89 electric motors; 2,500 hp
Compensator	Vetco MC-600-25D, 25 ft. stroke, 650 st locked
Rotary Table	National Oilwell A-49.5, 49-1/2 inch hydraulic, 800 st static load capacity
Top Drive	Varco TDS-5H, 650 st capacity, with 1 x EMD89 VTS motor, rated to 36,000 ft.-lbs. continuous drilling torque in low gear
Tubular Handling	1 x Iron Roughneck maritime hydraulics MH1898
Mud Pumps	3 x Continental Emsco FB-1600 1600 hp
HP Mud System	Rated for 5000 psi
Solids Control	3 x Axiom AX-1 shakers

### Power & Machinery

Main Power	3 x EMD MD -16-645-E9B diesel engines rated at 2,290 kW, 900 rpm each running 1 x EMD AC generator rated at 2,865 kW
Emergency Power	1 x Detroit GM 16V-92 diesel engine rated 670 kW, 1,800 driving 1 x Delco 650 kW AC generator.
Power Distribution	8 x Bauteil 2500 A / 700 V SCR system

### Storage Capacities

Fuel Oil	7,200 bbl
Liquid Mud	2,060 bbl active / 2,673 bbl reserve
Base Oil	3,156 bbl
Brine	3,156 bbl
Drill Water	6,000 bbl
Potable Water	1,322 bbl
Bulk Material	(Barite + cement) 535 st + 410 st
Sack Storage	150 st

### BOP & Subsea Equipment

BOP Rams	2 x Shaffer NL double rams 18-3/4 inch, 15,000 psi pressure capability
BOP Annulars	2 x NL Shaffer 18-3/4 inch, 10,000 psi pressure capability annular preventers.
BOP Handling Marine Riser	BOP Hepburn crane 2 x 85 st main hoists Cameron RD 21, 21 inch OD x 19.75 inch ID x 50ft long per joint
Tensioners	10 x 80 kips Western Gear riser tensioners, 40 st. each, 12.5 ft. max stroke
Diverter	Regan KFDS-3 diverter, 24 inch max bore, 500 psi working pressure, with 1 x 12 inch flow line outlet
Tree Handling	Overhead Crane and skid cart, 85 st.
Moonpool	24 ft. length x 17.9 ft. width

### Station Keeping / Propulsion System

Thrusters	4 x Pleuger 360 deg., 2,238 kW Variable Pitch
Mooring System	8 x Hepburn (NOV) drum winches with 520 st static brake capacity, 8 x mooring lines of 3 in. stud link chain, with 8 x Stevpris HHP 26,500 lbs. anchors

### Cranes

Cranes	2 x Bucyrus Erie Mk 100 revolving cranes, 118 ft booms, rated at 59.5 st at 50 ft radius
--------	--

### Other Information

Helideck	Rated for Chinook
----------	-------------------

Revision Date: 19 June 2014

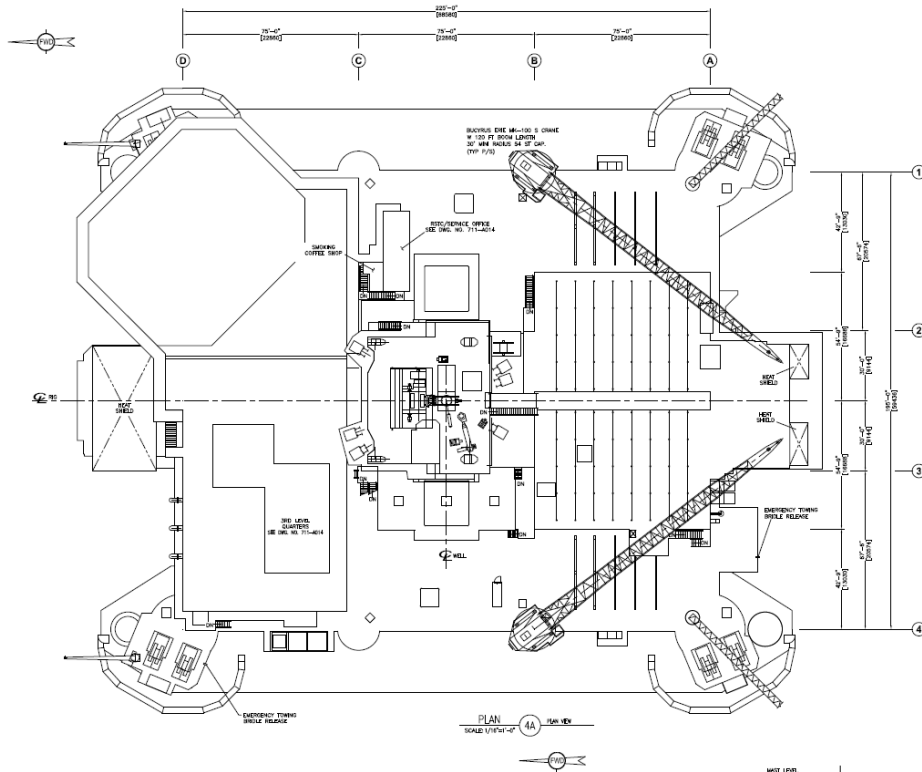


These specifications are intended for general reference purposes only, as actual equipment and specifications may vary based upon subsequent changes, the contract situation and customer needs. All equipment shall be operated and maintained at all times, in compliance with Transocean standard operating manuals, policies and procedures, and within its stated operational limits or continuous rated capacity, in order to assure maximum operational efficiency.

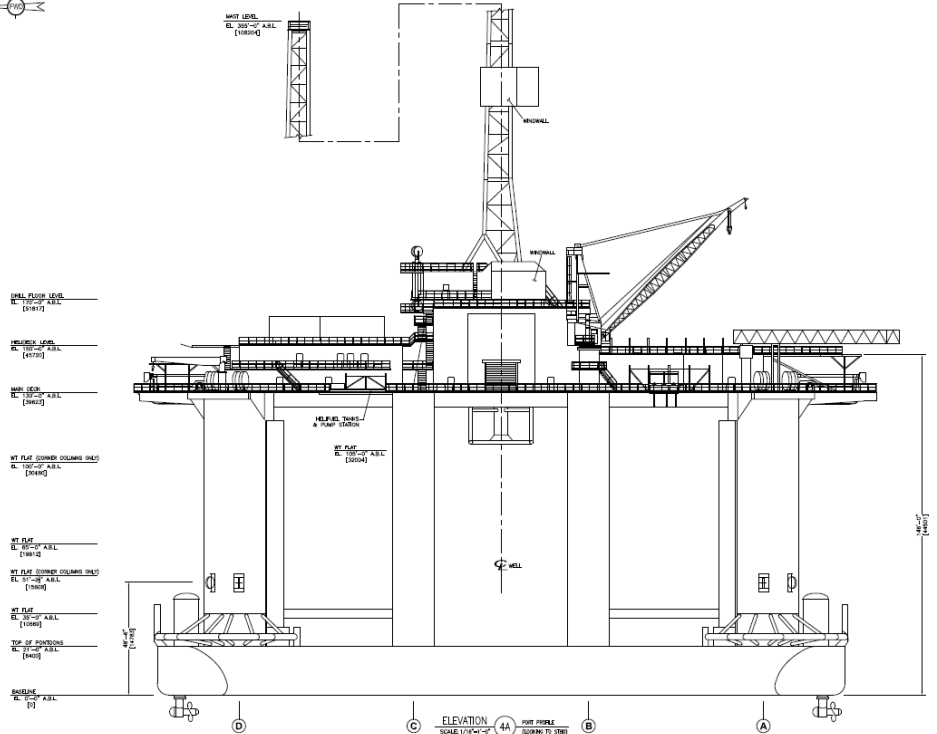
Patent Notice: This rig, its systems, components, and/or equipment in use on this rig, may be protected by one or more US and/or foreign patents.

# SEDCO 711

MIDWATER SEMI-SUBMERSIBLE



PLAN 4A  
SCALE 1/16"=1'-0"



- DECK FLOOR LEVEL  
EL. 247'-0" A.S.L.  
(2470)
- HELPER TABLE  
EL. 237'-0" A.S.L.  
(2370)
- WELL LEVEL  
EL. 227'-0" A.S.L.  
(2270)
- WELL  
EL. 217'-0" A.S.L.  
(2170)
- WELL FLOOR COLUMN HEAD  
EL. 207'-0" A.S.L.  
(2070)
- WELL FLOOR  
EL. 197'-0" A.S.L.  
(1970)
- WELL FLOOR COLUMN HEAD  
EL. 187'-0" A.S.L.  
(1870)
- WELL FLOOR  
EL. 177'-0" A.S.L.  
(1770)
- WELL FLOOR COLUMN HEAD  
EL. 167'-0" A.S.L.  
(1670)
- WELL FLOOR  
EL. 157'-0" A.S.L.  
(1570)
- TOP OF POSITION  
EL. 147'-0" A.S.L.  
(1470)
- BASELINE  
EL. 137'-0" A.S.L.  
(1370)

ELEVATION 4A  
SCALE 1/16"=1'-0" (LOOKING TO STE)

# BOUNDLESS

Revision Date: 19 June 2014



**SERVICE FOCUSED  
DATA DRIVEN  
PERFORMANCE ORIENTED**

These specifications are intended for general reference purposes only, as actual equipment and specifications may vary based upon subsequent changes, the contract situation and customer needs. All equipment shall be operated and maintained at all times, in compliance with Transocean standard operating manuals, policies and procedures, and within its stated operational limits or continuous rated capacity, in order to assure maximum operational efficiency.

Patent Notice: This rig, its systems, components, and/or equipment in use on this rig, may be protected by one or more US and/or foreign patents.