

DEEPWATER INVICTUS

ULTRA-DEEPWATER DUAL-ACTIVITY DRILLSHIP



For additional information please contact:

Transocean
Marketing Department
4 Greenway Plaza
Houston, TX 77046, USA
Phone: + 1-713-232-7500
Fax: + 1-713-232-7880
marketing@deepwater.com
www.deepwater.com

General Description

Design / Generation	DSME 12000 Ultra Deepwater Drillship
Constructing Shipyard	DSME (South Korea)
Year Entered Service / Significant Upgrades	2014
Classification	DNV X1A1
Flag	Marshall Islands
Dimensions	781 ft long x 138 ft wide x 62 ft deep
Drafts	39.4 ft operating / 29.5 ft transit
Accommodation	200 persons
Displacement	114,640 st operating
Variable Deck	22,636 st operating / 22,636 st transit
Transit Speed	up to 12.5 knots
Maximum Water Depth	12,000 ft designed / 10,000 ft outfitted
Maximum Drilling Depth	40,000 ft

Drilling Equipment

Derrick	Dual Aker MH Pyramid Dynamic Derrick 213 ft x 69 ft. x 52 ft
Hookload Capacity	(Main) 2,800,000 lbs. gross nominal capacity (Aux) 2,200,000 lbs. gross nominal capacity
Drawworks	(Main) AKMH Wirth GH 9000 EG-AC-1G, 4 x AC motors; 9,000 hp, 1,553 mt with 16 x 2-1/4 inch lines strung lines (Aux) AKMH Wirth GH 6000 EG-AC-1G, three AC motors; 6,000 hp, 1,140 mt with 14 x 2 inch lines strung
Compensator	(Main) Aker MH Crown Mounted Compensator with Active heave compensation, 750 st (680 mt) with 25 ft max stroke. (Aux) Aker MH Crown Mounted Compensator with Active Heave, 500 st (454 mt) with 25 ft max stroke.
Rotary Table	(Main) AKMH Wirth RTSS 75-1/2 inch hyd. 1250 st (1,134 mt) (Aux) AKMH Wirth RTSS 60-1/2 inch hyd. 1,000 st (908 mt).
Top Drive	(Main) 2 x Aker MH MDDM-1250-AC-2M 1,250 st (1,134 mt) tripping load, 945 st (857 mt) drilling load, 101,000 ft.-lbs. max continuous torque at 113 RPM, 0 - 280 max RPM, 2 x 1,050 hp ABB AC motors. (Aux) N/A.
Tubular Handling	2 x Aker MH Hydraulic Iron Roughneck MH 1899, multi frame, tubular range 3-1/2 inch to 9-3/4 inch. Aker MH racking systems tubular range 3-1/2 inch to 14 inch. 2 x Vertical Pipe Racking Systems including 15 st bridge cranes with lower guiding arms. 1 x Horizontal Tubular Feeding Machine to handle single joints drill pipe and casing or casing stands up to 90 ft.
Riser Feed	1 x Horizontal Riser Feeding Machine for 21 inch x 75 ft Riser Joints.
Mud Pumps	4 x AMH/Wirth TPK-7-1/2 x 14, 2,200 hp 7,500 psi
HP Mud System	Rated for 7,500 psi.
Solids Control	8-x Derrick Dual Pool (DP626); High G shale shakers

Power & Machinery

Main Power	6 x HHI HiMSSEN H32/40V V-type diesel engines rated 7,000 kW, 720 rpm, each driving 1 x 8,125 kVA AC generator
Emergency Power	One Caterpillar 3516B V-type diesel engine rated 1,780 kW, 1,800 rpm driving 1 x AC generator
Power Distribution	3 x Siemens NXPlus C Plus, 11 kV Switchboards with AKA Advanced Generator Protection

Storage Capacities

Fuel Oil	51,280 bbl
Liquid Mud	9,745 bbl active / 10,562 bbl reserve
Base Oil	5,031 bbl
Brine	5,031 bbl
Drill Water	18,869 bbl
Potable Water	9,359 bbl
Bulk Material	(mud + cement) 28,251 cu.ft.
Sack Storage	10,000 sacks

BOP & Subsea Equipment

BOP Rams	(Primary) Cameron 18-3/4 inch, 15,000 psi 7-ram preventer; (2 x TL Doubles + 1 x TL Triple).
BOP Annulars	(Primary) 1 x Cameron Dual DL 18-3/4 inch (2 x elements), 10,000 psi annular preventer
2nd BOP Stack	(Secondary) Cameron 18-3/4 inch, 15,000 psi 7-ram preventer; (2 x TL Doubles + 1 x TL Triple) with 1 x Dual annular
BOP Handling	BOP crane 2 x 275 st main hoists and 2 x 16.5 st service hoists; with BOP Trolley rated 595 st. 2 x 551 st BOP storage stands with sea-fastening.
Marine Riser	Cameron Load King 21 inch, 3,500 kips (H Class), 75 ft long per joint
Tensioners	8 x Aker MH Dual wireline riser tensioners, 250 kips each. Total capacity 4,000 kips with 12.5 ft stroke 50 ft max stroke.
Diverter	21-1/4 inch 500 PSI Type CSO diverter with 16 inch flow line
Tree Handling	1 x 165 st Xmas tree trolley with 2 x 165 st Xmas tree skid carts supplied with room to store up to 4 x carts. Xmas trees can also be lifted or handled with the 181 st. Active Heave Compensating Subsea Crane.
Moonpool	82 ft. x 33.5 ft. Outfitted with a two piece Moonpool Guide Array for improved transit characteristics.

Station Keeping / Propulsion System

Thrusters	6 x (three at forward, three at aft) Rolls Royce 5,500 kW variable speed, fixed pitch, fully azimuthing, underwater demountable thrusters.
DP System	Kongsberg DPS-3 rated for water depths up to 12,000 ft.

Cranes

Cranes	3 x 110 st NOV knuckle-boom cranes model OC4000KCE with semi-automated riser and tubular handling attachments.
AHC Subsea Crane	1 x 181 st NOV Active Heave Compensation knuckle-boom boom crane for handling subsea equipment up to 12,000 ft WD.

Other Information

Helideck	Rated for Sikorsky S-61 & S-92 helicopters
-----------------	--------------------------------------------

Revision Date: 29 August 2014

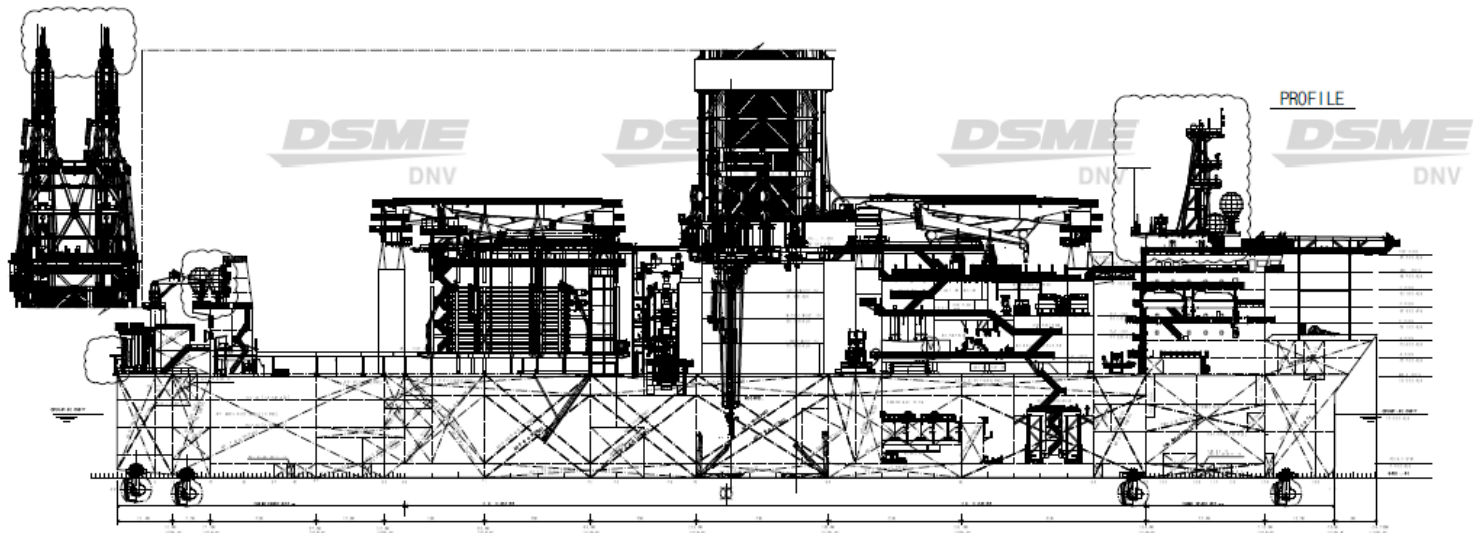
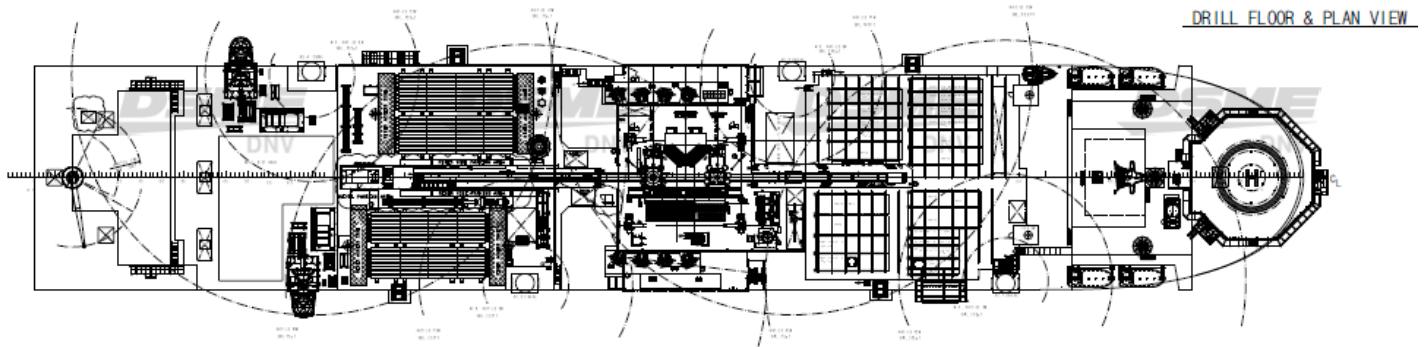


These specifications are intended for general reference purposes only, as actual equipment and specifications may vary based upon subsequent changes, the contract situation and customer needs. All equipment shall be operated and maintained at all times, in compliance with Transocean standard operating manuals, policies and procedures, and within its stated operational limits or continuous rated capacity, in order to assure maximum operational efficiency.

Patent Notice: This rig, its systems, components, and/or equipment in use on this rig, may be protected by one or more US and/or foreign patents.

DEEPWATER INVICTUS

ULTRA-DEEPWATER DUAL-ACTIVITY DRILLSHIP



BOUNDLESS

SERVICE FOCUSED
DATA DRIVEN
PERFORMANCE ORIENTED

Revision Date: 29 August 2014



These specifications are intended for general reference purposes only, as actual equipment and specifications may vary based upon subsequent changes, the contract situation and customer needs. All equipment shall be operated and maintained at all times, in compliance with Transocean standard operating manuals, policies and procedures, and within its stated operational limits or continuous rated capacity, in order to assure maximum operational efficiency.

Patent Notice: This rig, its systems, components, and/or equipment in use on this rig, may be protected by one or more US and/or foreign patents.