

# Sedco 706



**For additional information  
please contact:**

Transocean  
Marketing Department  
4 Greenway Plaza  
Houston, TX 77046, USA

Phone: + 1-713-232-7500  
Fax: + 1-713-232-7880  
Marketing@deepwater.com  
www.deepwater.com

## Deepwater Semi-Submersible

### General Description

<b>Design / Generation</b> .....	Earl & Wright SEDCO 700 Class
<b>Constructing Shipyard</b> .....	Kaiser Steel Shipyard Oakland, CA. USA
<b>Year Entered Service / Significant Upgrades</b> .....	1976 / 1994, 2007
<b>Classification</b> .....	ABS +A1, DPS-2
<b>Flag</b> .....	Liberia
<b>Dimensions</b> .....	295 ft. long x 245 ft. wide x 130 ft. deep
<b>Drafts</b> .....	.83 ft. operating / 21 ft. transit
<b>Accommodation</b> .....	150 persons
<b>Displacement</b> .....	34,339 st operating / 21,847 st transit
<b>Variable Deck</b> .....	4,409 st operating / 3,307 st transit
<b>Transit Speed</b> .....	up to 5 knots
<b>Maximum Water Depth</b> .....	6,500 ft. designed / 6,500 ft. outfitted
<b>Maximum Drilling Depth</b> .....	25,000 ft.

### Drilling Equipment

<b>Derrick</b>	Woolslayers Companies Inc., 185 ft. high, with 50 ft. long, 40 ft. wide base.
<b>Hookload Capacity</b>	1,300,000 lbs. gross nominal capacity.
<b>Drawworks</b>	Oilwell E-3000, 3 x EMD M-79 electric motor; rated to 3,000 hp and 1,478,900 with 14 1-3/4 inch drilling lines.
<b>Compensator</b>	NOV Shaffer, with a 25 ft. stroke and 1,200,000 lbs with a locked compensator.
<b>Rotary Table</b>	Continental Emsco T-6050 60-1/2 inch hydraulic; rated to 1,000 st.
<b>Top Drive</b>	Varco TDS-4S, with a 650 st capacity and with GE 752 Hi-torque traction motors rated at 45,500 ft/lbs. continuous drilling torque in low gear.
<b>Mud Pumps</b>	3 X Oilwell A-1700 P.T. rated at 1,600 hp triplex pumps, each driven by 2 x EMD D-79-DC traction motors.
<b>HP Mud System</b>	Rated for 5,000 psi
<b>Solids Control</b>	4 x Derrick FCL 514 shale shakers

### Power & Machinery

<b>Main Power</b>	6 x Caterpillar 3612 diesel engines rated at 3,640 kW, 900 rpm, each driving a 4,550 kVA Kato 8P12-4000 generator.
<b>Emergency Power</b>	1 x Caterpillar 3508B diesel engine rated 968 kW, 1,800 rpm driving a Kato 4P6-1800 generator.
<b>Power Distribution</b>	6 x EPD SCR, EPD, 11kv switchboards.

### Storage Capacities

<b>Fuel Oil</b> .....	9,755 bbls.
<b>Liquid Mud</b> .....	2,400 bbls. Active / 3,300 bbls. Reserve
<b>Base Oil</b> .....	1,100 bbls.
<b>Brine</b> .....	5,000 bbls.
<b>Drill Water</b> .....	5,800 bbls.
<b>Potable Water</b> .....	1,324 bbls.
<b>Bulk Material</b> .....	(mud + cement) 18,760 cu.ft
<b>Sack Storage</b> .....	2,500 sacks

### BOP & Subsea Equipment

<b>BOP Rams</b>	1 x GE Hydril Compact Triple (TRBOP) ram preventers and 1 x GE Hydril Compact Double (DRBOP) ram preventers, 18-3/4 inch, 15,000 psi. (5 ram preventer)
<b>BOP Annulars</b>	1 x Annuflex GX double assembly annular preventer, 18-3/4 inch, 10,000 psi.
<b>BOP Handling</b>	BOP crane 2 x 100 st main hoists and 2 x 15 st service hoists.
<b>BOP Control</b>	Cameron acoustic system
<b>Marine Riser</b>	Vetco 21 inch OD (19-3/4 inch ID), 18,787 flotation weight in air. API 51 x 80, 65 ft. long per joint. Riser buoyancy 47 inch OD.
<b>Tensioners</b>	8 x Control Flow dual riser tensioners, rated at 60 st each; with a 12.5 ft. stroke.
<b>Diverter</b>	60-1/2 inch 500 psi Vetco KFDS diverter with a 16 inch flow line.
<b>Moonpool</b>	20 ft. length x 20 ft. width.

### Station Keeping / Propulsion System

<b>Thrusters</b>	8 x (4 at forward, 4 at aft) Rolls Royce 2,300 kW azimuthing thrusters; (0- 600 rpm, fixes pitch)
<b>DP System</b>	Kongsberg SPD32 SVC DPS-2 with triple redundancy.
<b>Mooring System</b>	2 x Baylor electric drum winches with 1,000,000 lbs. static brake capacity, 2 x 1,000 ft. of 3 inch stud link chain, no anchors.

### Cranes

<b>Crane #1</b>	1 x 54 st National OS-435 pedestal crane.
<b>Crane #2</b>	1 x 67 st Seatrax S-9022 pedestal crane.

### Other Information

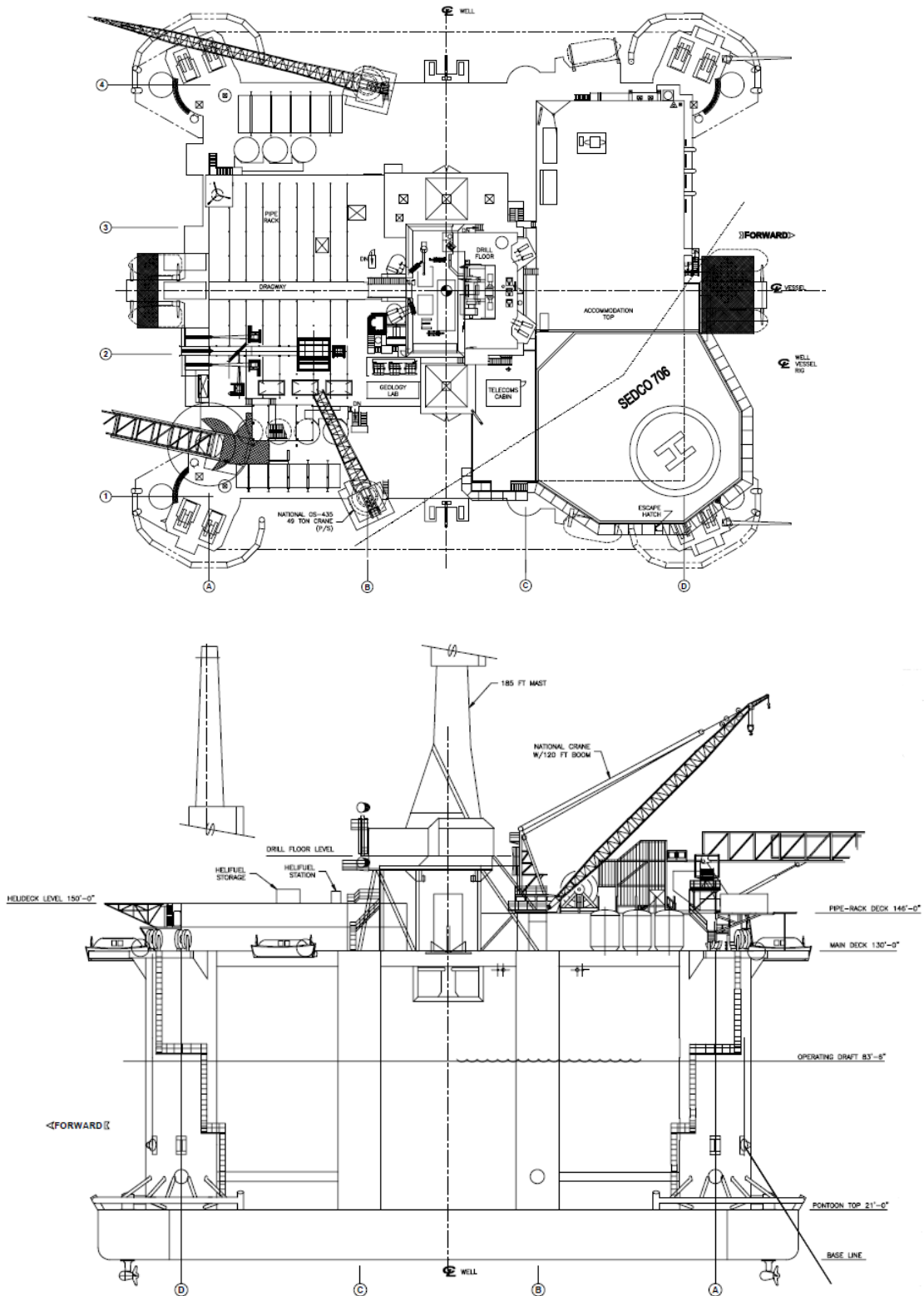
<b>Helideck</b>	Rated for Sikorsky S-92 helicopters
-----------------	-------------------------------------

Revision Date: 23 Nov 2015



These specifications are intended for general reference purposes only, as actual equipment and specifications may vary based upon subsequent changes, the contract situation and customer needs. All equipment shall be operated and maintained at all times, in compliance with Transocean standard operating manuals, policies and procedures, and within its stated operational limits or continuous rated capacity, in order to assure maximum operational efficiency.

# Sedco 706



Revision Date: 23 Nov 2015



These specifications are intended for general reference purposes only, as actual equipment and specifications may vary based upon subsequent changes, the contract situation and customer needs. All equipment shall be operated and maintained at all times, in compliance with Transocean standard operating manuals, policies and procedures, and within its stated operational limits or continuous rated capacity, in order to assure maximum operational efficiency.