

Polar Pioneer



**For additional information
please contact:**

Transocean
Marketing Department
4 Greenway Plaza
Houston, TX 77046, USA

Phone: +1-713-232-7500
Fax: +1-713-232-7880
Marketing@deepwater.com
www.deepwater.com

High Specification Harsh Environment Semi-Submersible

General Description

Design / Generation	4 th gen. Polar (Sonat) Hitachi
Constructing Shipyard	Hitachi Zosen, Ariake, Japan
Year Entered Service / Significant Upgrade	1985/ 1994,1999,2004,2009,2014
Classification	DNV, 1A1, ICE-T (1C), HELDK, DRILL, POSMOOR-ATA
Flag	Marshall Islands
Dimensions	400 ft. long x 292 ft. wide x 137 ft. deep
Drafts76 ft. operating / 30 ft. transit
Accommodation	114 persons
Displacement	46,440 mt operating / 32,554 mt transit
Variable Deck	2,975 mt operating / 2,382 mt transit
Transit Speed	up to 6 knots
Maximum Water Depth	1,640 ft. designed / 1,640 ft. outfitted
Maximum Drilling Depth	25,000 ft.

Drilling Equipment

Derrick	Maritime Hydraulics, 170 ft. high, with 40 ft. x 40 ft. base
Hookload Capacity	1,000,000 lbs. gross nominal capacity.
Drawworks	Continental Emsco C3, 3,000 hp, with 1-1/2 inch drilling line. Baylor 7838 eddy current brake.
Compensator	Maritime Hydraulics CBC 270-25 with a 25 ft stroke, and rated at 610,000 lbs. compensated and 1,000,000 lbs locked active heave compensation.
Rotary Table	Continental Emsco T4950 49-1/2 inch opening rated to 1,300,000 lbs. and electrically driven.
Top Drive	Maritime Hydraulics DDM 650-HY 4 x Bosh Rexroth hydraulic motors; rated to 37,000 ft.-lbs. continuous drilling torque in low gear.
Tubular Handling	Maritime Hydraulics MH996 pipe racking system with the capacity for up to 110 stands of 6-5/8 inch drill pipe
Mud Pumps	3 x Continental Emsco FB1600 triplex pumps, each driven by 2 x GE 752 traction motors.
HP Mud System	Rated for 5,000 psi
Solids Control	4 x Axiom AX-1 shale shakers

Power & Machinery

Main Power	5 x Bergen KVG-18 diesel engines rated at 2,750 kW each driving AC generators. Situated in two engine houses, total power 13750 kW
Emergency Power	1 x MTU 12-396 diesel engine rated 1,137kW, driving 1 x AC generator.
Power Distribution	16 x ABB SCR rated at 8,680 kW, switchboards with AC generator protection.

Storage Capacities

Fuel Oil	16,143 bbls @ 100%.
Liquid Mud	1,720 bbls. Active / 1,973 bbls. Reserve
Brine	5,477 bbls.
Drill Water	12,265 bbls.
Potable Water	5,172 bbls.
Bulk Material	28,012 cu.ft @ 100%
Sack Storage	1,500 sacks

BOP & Subsea Equipment

BOP Annulars	1 x Hydril GX 18-3/4 inch 10,000 psi annular preventer.
BOP Rams	2 x Hydril Type 18-15M 18 3/4 inch 15,000 psi 5 ram preventer (1 x Double Ram Compact & 1 x Triple Ram Compact), with 1 x LMRP
BOP Handling	BOP crane: Aker MH AS Protea 364-MV0210 overhead gantry crane with 2 x 150 mt main hoists. 1 x Aker MH AS Protea 10-MX101 trolley rated at 300 mt.
Marine Riser	Hughes HMF 21 inch OD riser with 3-1/2 inch choke and kill lines, working pressure 15,000 psi.
Tensioners	8 x Wichman tensioners rated at 45 mt each and a stroke length of 12.5 ft. and a total line travel of 50 ft.
Diverter	Hughes KFDS rated at 500 psi with 14 inch overboard lines.
Tree Handling	4 x 65 mt Xmas tree hydraulic skid plates with 1 x Xmas tree tractor cart.
Moonpool	20 ft. length x 59 ft. width.

Station Keeping / Propulsion System

Thrusters	4 x Liaan TNCP 105/75-280 rated at 2,400 kW azimuthing
Mooring System	4 x double Pusnes windlasses 8 x Verhof Stevshark MK-5 15 mt rated anchors with 5 mt of ballast using 84mm x 6,000 ft (nominal) stud link chain

Cranes

Crane #1	1 x NOV OC3000 crane and rated at 65 mt.
Crane #2	1 x Liebherr BOS-4200-50 crane rated at 50 mt.

Other Information

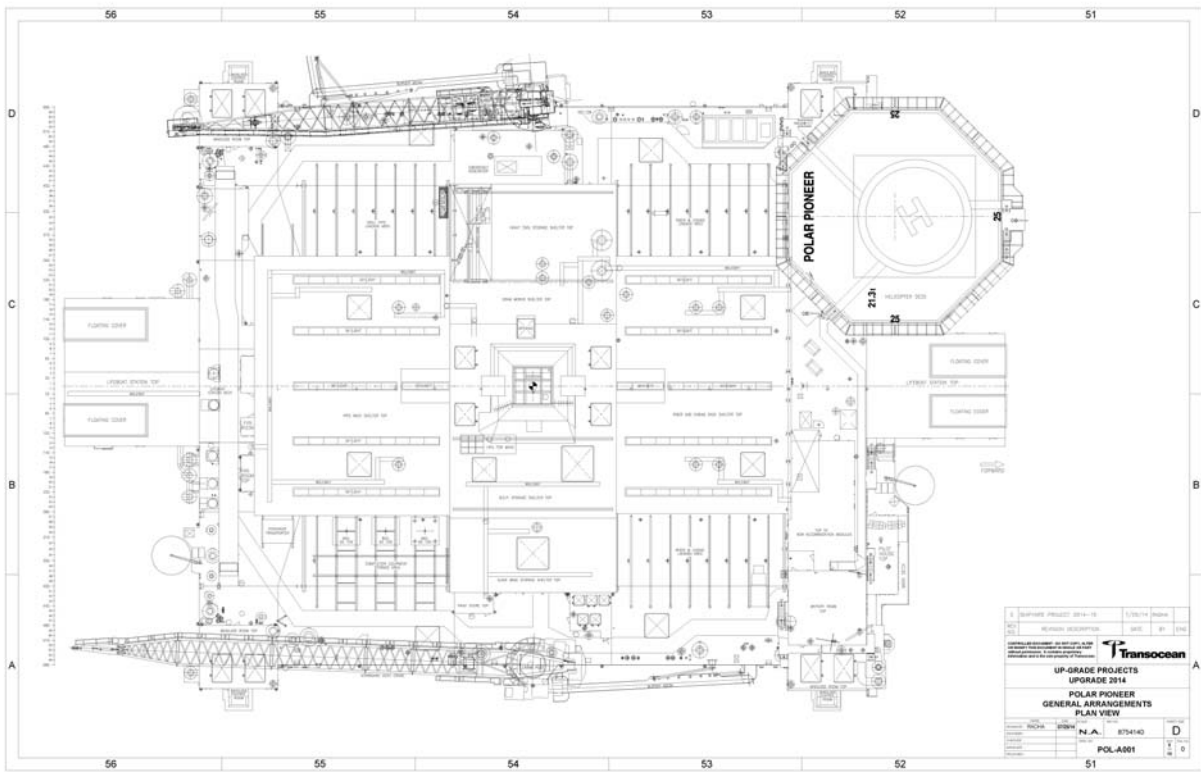
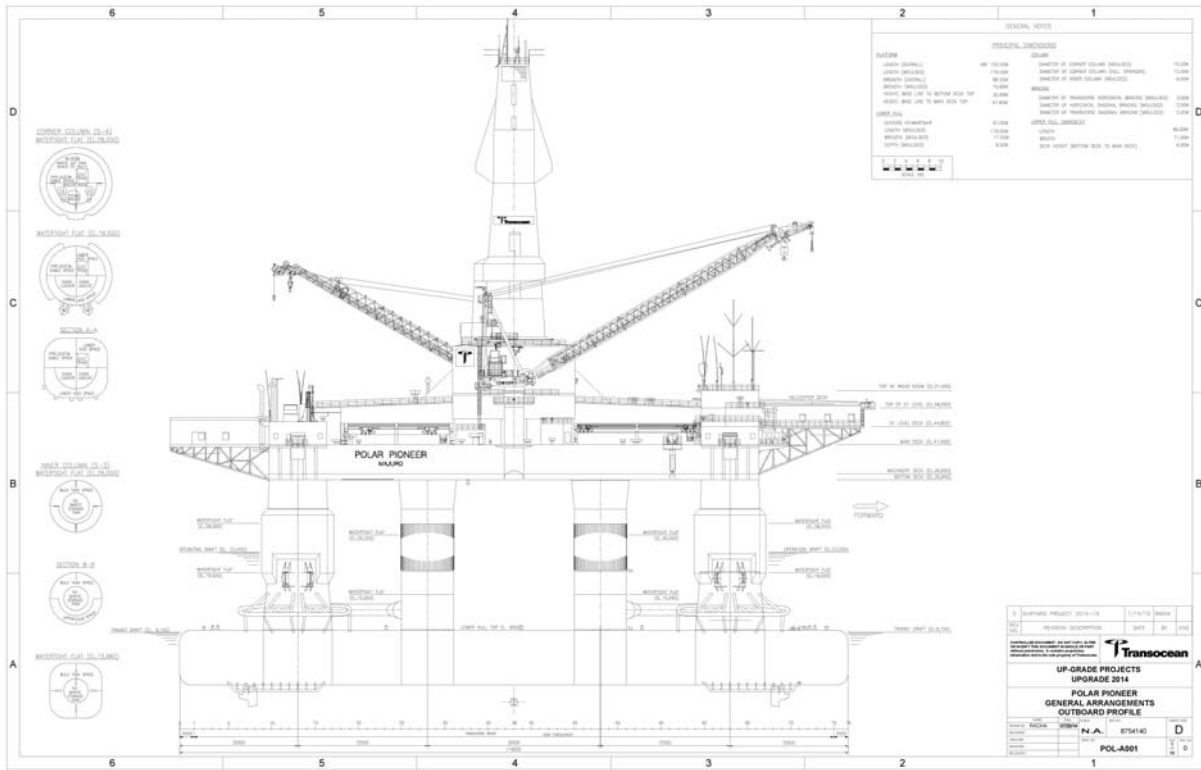
Helideck	Rated for Sikorsky S-61 or S-92 and Super Puma helicopters.
-----------------	---

Revision Date: 18th October 2015



These specifications are intended for general reference purposes only, as actual equipment and specifications may vary based upon subsequent changes, the contract situation and customer needs. All equipment shall be operated and maintained at all times, in compliance with Transocean standard operating manuals, policies and procedures, and within its stated operational limits or continuous rated capacity, in order to assure maximum operational efficiency.

Polar Pioneer



Revision Date: 18th October 2015



These specifications are intended for general reference purposes only, as actual equipment and specifications may vary based upon subsequent changes, the contract situation and customer needs. All equipment shall be operated and maintained at all times, in compliance with Transocean standard operating manuals, policies and procedures, and within its stated operational limits or continuous rated capacity, in order to assure maximum operational efficiency.